



DUNCHURCH VILLAGE MAGAZINE

JUNE 2023

ISSUE 19



PRODUCED BY FRIENDS OF DUNCHURCH SOCIETY

www.friendsofdunchurchsociety.org

IN THIS ISSUE

Welcome	2	Dunchurch Allotments	16	Coronation Art	33
Making a Difference (MAD)	6	Coronation Oak	19	St Peter's Church	35
Festival Group Fete	8	Women's Institute	21	Dunchurch Library	35
Dunchurch Parish Annual Assembly Statement by FODS	10	Local View – Benchmarks	23	Concerts at St Peter's	37
Coronation Celebration	13	Coaching Days in Dunchurch and District – Part 2	24	Dunchurch Traders	38
Dunchurch Pantomaniacs	14	Girlguiding	27	Baptist Church	40
Art in Dunchurch	15	Doctors in Dunchurch	29	Dunchurch Pantry	40
		Road Building in Dunchurch	31	Directory	42

email friendsofdunchurch@gmail.com

Formed by likeminded residents who love Dunchurch and its heritage and wish to protect and enhance its environment in order to make the village a better place to live in, work in and visit.



FRIENDS OF
DUNCHURCH
SOCIETY (FODS)

Welcome

Since publishing our first issue of the Dunchurch Village Magazine, we have endeavoured to shine a light on the positive aspects of our village and in particular, its very rich history. One such article in our June 2019 issue included a *Rugby Advertiser* article from May 1935. This celebrated the Silver Jubilee of George V with the planting of a copper beech tree on the corner of Cawston Lane and Rugby Road on an area that had been referred to as 'the Heath Pit' and 'an offensive eyesore'. This tree still stands proud on the green that surrounds it and in spring, the area has been further enhanced by a beautiful display of daffodils and in summer, a metal support with four hanging baskets sponsored by The Dunchurch Pantomaniacs. What became known as Jubilee Corner is now far from the 'offensive eyesore' it was once described, and we can

be thankful to those folk who originally transformed the area by marking their own historical occasion by the planting of a tree.

How fitting then, the May Coronation of King Charles III should be marked by the addition of an English oak on the large green opposite the copper beech. This sits alongside the wonderful Oak Line planted last June to celebrate our late Queen's Jubilee. History may be some-

thing from the past but it is made in the present and perhaps in years to come, folk will be reading about our own tree-planting ceremonies and marvelling at the beauty of 11 established and sturdy oaks and wondering about the people who had put them there. (See page 19 for more details on the Coronation Oak.)



Wendy and Glynis on parade at the Spring Fair

FODS News

Spring Fair Thank you to all the volunteers who worked to make

this such a success and to all those who came along and supported it. We raised more than £550 for future projects.

Easter Virtual Balloon

Race This was great fun and raised a further £209.68 which equates to the provision of five hanging baskets. Thank you to everyone who took part and to Sue and Tony Kember for donating the Easter Egg prizes.



Virtual balloons flew over Dunchurch at Easter

Donations Our thanks to a lady who drives through the village and has so admired the improvements, that she has made a donation in memory of her late husband. This money has been used to purchase 20 new troughs. Some of these are still available if anyone would like to join others in planting one for display in the village centre as part of the Dunchurch entry into Rugby in Bloom. Email fodnews1@gmail.com for more information (all ages welcome).

Further thanks go to a Daventry Road resident for a donation of £200 and to the

Heart of England Cooperative Society for a donation of £300 made under their Helping Hearts Scheme. With the latter, we have purchased some more hi-vis jackets and items for our wonderful Make a Difference team (MAD). You too can join these friendly folk and become a fashionista in your very own hi-vis jacket! See page 6 for more information.



Matilda and Oscar are looking forward to planting up their new trough in support of Dunchurch in Bloom

New Bench A new bench is to be installed in the churchyard in a location chosen by Rev Townshend and using funds received from a WCC grant via Cllr Howard Roberts. Our thanks to him and all concerned for cooperating on this project.

'Tommies' Originally purchased by FODS and displayed on the memorial green for remembrance Sunday, the 'Tommies' have now been relocated to St Peter's Churchyard to highlight the war graves. Our thanks to the folk from St Peter's for accommodating these.

Dunchurch Parish Annual Assembly, 24th April We were pleased to attend this and our report, which was read out at the meeting, can be found on page 10.

And finally A big shout out for the Dunchurch Festival Group who are busy organising this year's fete which is on Sunday 25th June. We will be there to help and would encourage you to come along and support the DFG. This is the biggest event in the Dunchurch calendar and many groups from the village benefit from the profits. We hope to see you there.



Tommies standing proud in St Peter's churchyard



Cordwood Tree Services

Local Arborist

07377717509

Email:

cordwood_treeservices@outlook.com



THE KITCHENS INC

WARWICKSHIRE, ENGLAND



ALL INCLUSIVE INSTALLATION

As well as offering an exceptional range of kitchen furniture, appliances and luxury surfaces, our independent installation teams offer an all inclusive service.

Including structural work, plastering, re-wiring, flooring, tiling, plumbing, gas fitting, lighting and heating.

The Square, Dunchurch, CV22 6NU | 01788 220 206 | thekitchensinc.co.uk

FODS Focus on our Make a Difference Team (MAD)

Join us in applauding this small but hardworking team of volunteers who tend to areas of the village requiring some extra TLC. Led by Sue Turner, they frequently meet on Sunday mornings, weeding, sweeping and brushing pathways and washing

hardware such as lamp-posts, information boards and bins. Extra attention is also given to the village memorial area ensuring its surrounds are kept clean and weed-free in honour of what it represents.

You will often see Phill or Darren cutting the three central grass

areas, and in the summer months, find them with Rob keeping the new lamppost hanging baskets watered. This year, they and others will be using a new, lighter water bowser



Clockwise from top left:

The MAD team are cutting grass!

'One man went to mow'

Karl and Julie swapping their panto and DFG hats to help FODS at the memorial

Whistle while you work Mark!

purchased with a grant from Dunchurch Parish Council. Our thanks to DPC.

If you would like to join this

very friendly team (meetings usually conclude in one of the village hosteleries!) contact Sue on 07983 345381.



Clockwise from top left:

Rob, Phill and Darren, our very own Three Musketeers

Weeding and sweeping shop frontages

Sprucing up the village notices

A happy social gathering rounds off a very productive hour

Festival Group Fete

The Fete has been an annual event for over 40 years and has raised many thousands of pounds for local good causes and charities. Over the last 12 years alone, we have donated over £90,000 of your money to a wide range of these organisations within our lovely village.

The Festival Group would like to thank all our helpers, donors and everyone who attended any of our events during the year for your continued support. We couldn't do it without you!

Projects submitted to the Dunchurch Festival Group for a grant are considered each year and the village fete is our biggest fundraiser. This year, the theme is 'what I want to be when I grow up'. There will be many acts, entertainment and open-mic performers appearing.

The BBQ, bar, tea and cakes and the grand raffle will be supplemented by dozens of other village and trade stalls. Plus, this year we will be running the dog show (with prizes) again.

And remember our surpluses are all channelled back into deserving causes in your community. Please come and join us, whatever the weather, and have fun!

Admission is free but we welcome donations at the gate to go towards local causes. Thank you.



King Charles III Express



Our thanks to BB and Peter for the donation of this fabulous train.

All aboard the King Charles III Express stopping at the Lord John Scott statue!



JEM Financial Planning Ltd

DO YOU NEED HELP AND ADVICE WITH YOUR PENSION AND INVESTMENTS?

Hello, my name is Ben Morris, I am a fully qualified IFA living locally in Dunchurch.

I work with JEM Financial Planning Ltd. who Independent Financial and Mortgage Advisers.

We believe that providing a professional but personal service is essential in today's ever-changing and often confusing world of Financial Services. We can provide unbiased and relevant financial advice whatever your circumstances, from the whole of the Financial Services market.

Starting with an initial meeting, which is always held at our own expense, we will be with you through every step of your financial journey. We look to build long lasting relationships to help you now and in the future.



I CAN HELP AND ADVISE YOU ON THE FOLLOWING

- Pensions and Retirement Planning
- Investments and Savings
- Personal Protection
- Business Protection
- Mortgages
- Mortgage Protection
- General Insurance
- Inheritance Tax Planning

Mobile: 07896942002

Email: ben@jemfinancial.co.uk

Website: www.jemfinancial.co.uk

Dunchurch Parish Annual Assembly Statement by FODS

This was written and read out by Sue Turner at the Parish Assembly on 24th April, before the Coronation and lighting of the beacon

What a year 2022 was for the Friends of Dunchurch Society!

Despite obstacles constantly challenging the team, we ploughed on, finding solutions, planning and working hard to achieve our goal. We were aiming for the highest awards in the Regional and National Royal Horticultural Society 'In Bloom' competitions – and we were not disappointed with our results!

In July, the RHS Heart of England in Bloom judges visited Dunchurch on one of the hottest days of the year. They were absolutely amazed at how fantastic the village looked. One comment from them was 'utterly weed, graffiti and dog foul free. On the day, Dunchurch must have been the cleanest village in Warwickshire', and the amount of community groups and projects that were in the village centre caught their attention and impressed them.

As a result of our hard work, the judges awarded FODS a Gold in the Large Village Category, against seven other counties, and overall category winner.



Sue Kember and Barbara Harris accepted an RHS Gold award on behalf of Dunchurch from TV Gardeners'World presenter, Rachel De Thame

Three weeks later, the big one, the National competition – the RHS Britain in Bloom. A different pair of judges arrived on another searingly hot day to survey, critique, listen, look and enjoy the centre of Dunchurch (and even braved a dance around the maypole!). One comment from the judges afterwards was 'FODS are becoming legacy makers in this village and have well and truly put Dunchurch on the map, definitely a place to visit!' We had so many more amazing comments and feedback that can be read by visiting our website.

This year FODS are encouraging Dunchurch residents and businesses to enter Rugby in Bloom. Fronts of buildings, front gardens or one beautifully-planted pot can be entered, so, we have the Blooming Barrows and Tantalising Troughs on offer again this year to encourage groups, family and individuals to enter while display-

ing these around Dunchurch for all to enjoy.

The beacon is being lit on Friday 5th May in a joint venture with FODS and DPC, to commemorate the coronation of King Charles III. Mike Judge will be planting the Coronation Oak at the start of proceedings.

There will be entertainment provided by Pipe Major Vincent Deery, The Dunchurch Voices, Dunchurch Band, Thea Watson and (hopefully) community singing and flag waving to finish the evening. More details can be found on our Facebook page.

The staddle stones will again, be appropriately enhanced by Coronation Yarn Bombing. Each stone being adorned with its own amazing work of art and we all know they will look incredible.

Winter Wonderland was a huge success, split between the village green and the Dunchurch Social Club. A great fundraiser and enjoyable community event. Details for this year are already under discussion.

The Dunchurch Village Magazine (not the FODS magazine as it is sometimes wrongly called), is hand-delivered to homes and businesses in the area with several pick-up points for people out of the area that may be interested in the activities of Dunchurch. The team of volunteers that put together this glossy magazine constantly work hard to pro-

duce the quarterly editions. Filled with past and future events, exciting, uplifting, sometimes sad news, inspirational stories, tales of historic Dunchurch, interviews, fabulous pictures and useful group contact numbers, the magazine is funded by the local businesses that pay for advertising space starting from £25. We are pleased that David Wilson Homes have agreed to sponsor the 'Traders and Where to Find Them' pages again this year.

Lastly, Friends of Dunchurch would like to say a huge thank you to all the groups and individuals who have made donations to us – money, chocolate and bottles and bric-a-brac for stalls to raise money – and anyone who has turned up at an event over the past four years (and hopefully events to come). This money helps to restore the centre of the village back to its beautiful best and allows FODS to continue the good work that has been ongoing since spring 2019.

All groups know that it's difficult to recruit and encourage volunteers and there are always people happy to stand at the side giving opinions but few people willing to actually do – the team of FODS seem to be different...

And to the fabulous FODS that turn out when they get the call and who spend time Making A Difference (MAD) – a personal thank you to you all from me.

Full Colour Printing • Vehicle Graphics • Labels & Stickers
Letterheads • Business Cards • Newsletters • Graphic Design
Large Format Print • Flyers & Booklets • And much more




Full colour BANNERS and cut to shape STICKERS



UNIT 41, SIR FRANK WHITTLE BUSINESS CENTRE
GREAT CENTRAL WAY, RUGBY CV21 3XH
EMAIL: INFO@THEPRINTINGWORKS.CO.UK


TELEPHONE: **01788 543700**

 theprintingworks.co.uk




EVOLUTION-PHYSIO

DESIGNED TO MOVE, BUILT TO LIVE

 07778 022033

 info@evolution-physio.co.uk

 www.facebook.com/EvolutionPhysioUK

Overcome your limitations.

From professional athletes wanting to return to optimum fitness to clients wishing to live pain free, we can help you!

Enhance your training and rehab with a leading dynamic Gait Scan Analysis & bespoke orthotics! As used by the professional athlete.



Are you under 25 and needing financial help with your education??

Did you know that the Dunchurch and Thurlaston Educational Foundation can give small grants to its residents for educational purposes?

(*Education in the broadest sense)

Apply NOW

contact Fiona on b.fitzsimons@talktalk.net or
07767 142770

Dunchurch and Thurlaston Education Foundation—Charity No. 528738

King Charles III Coronation Celebration

6.45pm, Friday 5th May 2023

Over 300 attended this event on The Heath. Mike Judge and the Girl Guides planted the King's Oak as Pipe Major Deery (sponsored by DPC) played and the audience watched, as the Scouts distributed song sheets and small wooden crowns donated by FODS member Barbara.

Guy Watt, in his Union Flag waistcoat, was compère and Dunchurch Voices sang a medley of songs beginning with a fast-paced rendition of *The Rhythm of Life* and a repertoire including songs from *Les Misérables* and a London Medley.

Then the Dunchurch Band struck up – and who doesn't love the sound of a band at these events? Toe-tapping tunes included *Love Shine a Light* and *You Can't*



Barbara Davies and Dunchurch Voices
(Photo by Keith Protheroe)



Sue Kember and Dunchurch Ambassadors light the beacon
(Photo by Barrie Lambert)

beacon to cheering and applause.

The evening concluded with community singing and if there had been a roof, it would have been lifted to the strains of *Rule Britannia*, *Land of Hope and Glory*, *Jerusalem*, *The National Anthem* and *Auld Lang Syne*.

At the end, there was a live link to Dan Sambell on BBC CWR to report on the event's success.

This event required a lot of hard work and FODS would like to thank everyone who participated, including Sue Turner and her volunteers. Three cheers for them and his Majesty the King.

Stop the Beat.

Talented soloist Thea Watson sang *Somewhere Over the Rainbow* and included a real crowd pleaser, *Build Me Up Buttercup*.

Katie Wederell of the Baptist Church said a prayer for the King and Rev Townshend from St Peter's gave a blessing, before Sue Kember and young Ambassadors Sophie and Isabelle lit the

Pantomaniacs

By Sue Protheroe

At the AGM of the Dunchurch Pantomaniacs on Tuesday 4th April, it was noted that ticket sales for the January production of 'The Pie Rats of Penzance' were the best since 2015 (766 tickets sold).

From accumulated funds, it was agreed to retain £4,000 for the funding of the next production and as a contingency for

unforeseen circumstances. A further £2,250 was kept back for improvements to sound and lighting. This left £3,750 for charitable donations and following discussion, this was apportioned as follows: Rugby Rotary £250, Rugby First Responders £500, Air Ambulance £750, New Directions (formerly Rugby Gateway Club) £500, FODS £200, Alzheimer's Society £250, World Guides visit £100 and Our Jay Foundation £1,200 towards a new defibrillator.

The Pantomaniacs would like to thank everyone who came along and supported their return to stage after a three-year break. If you are interested in joining them, email Paul Le Poidevin at paul.lepoidevin@bt-openworld.com or Sue Protheroe on sueprotheroe@ymail.com



Jane Archer - Artist

Original watercolours, prints, cards and cushions.

Find me @ Art In Dunchurch 17th June – 1st July

Art In The Park, Leamington, 5th – 6th August

janearcher8@gmail.com

Jane Archer Artist

@janearcherartist

www.janearcherart.co.uk



Classes and workshops at my studio in Toft Lane, Dunchurch.
See website for details

Art in Dunchurch

Artists will again be showing their work this summer in the fabulous gardens of Inglenook and Fosse House Gallery right in the centre of our lovely village. Art in Dunchurch is now established as an annual 'must visit event' for anyone interested in the local art scene. Come along and meet the artists, enjoy the garden and enjoy a drink and cake with friends in our beautiful courtyard café.

This summer, 20 talented artists will be exhibiting their work including many of our favourite artists returning by popular

demand.

We are also

pleased

to announce we have six new talented artists joining us, some recognised on both the national and international art scene, whilst others will be exhibiting their work for the very first time. In addition, we will be showcasing the emerging talents of young artists from Dunchurch Junior School. This will be a real community event catering for all interests, with opportunities to see

artists at work and be inspired by the wide range of artistic forms on display.

As always, the courtyard café with its new canopy will be providing drinks and cakes each day that we are open and again this year we are having our hugely popular late opening evening event with live Jazz from 'After Dark' and drinks from the bar by 'The Square'.

Visit us between 10.30am and 4.30pm on seven days – Saturdays, Sundays and Wednesdays – from 17th June to 1st July with our evening event on Wednesday 28th June from 6pm–8pm.

We look forward to welcoming you.



Dunchurch Allotments

By *Paul Sanders*

Allotment holders visiting their plot in late February would have noted the activity of soil excavators in the farmers field to the east of the site. The permanent pasture meadow normally reserved for sheep and hay production had been turned into a series of strip trenches set about randomly all across the ground. With a width of about 6ft and length of around 100ft, the curious excavations could be imagined as trial scrapes by an apprentice learning the ropes on his first backhoe machine. That is until you get up close and notice the precision, depth and differentiated character of the soil making up the numerous



heaps. What is happening here is the pre-planning archeological investigation and survey which has to be carried out on land prior to development. Geophysical survey and trial trenching are the most common forms of survey for buried archaeological remains. If allotment holders were hopeful of an iron-age settlement, they were sadly disappointed. The archaeologist reported no significant finds.

From a gardener's point of view, it was interesting to see the soil profile as it changed from a thin layer of dark organic rich earth to a sandy and stony subsoil. It is reasonable to surmise that the profile of the soil on the allotment gardens is similar, leading to the relatively free-draining terrain that we experience.

The Allotment Association's commemorative orchard has been in existence for around eight years with almost all trees having borne fruit. A couple of years ago the variety called Coul Blush snapped at the graft due to the weight of fruit on this young tree. This was replaced this winter along with another variety which was failing to thrive. The trees are almost all heritage varieties and many date back hundreds of years, for example, Bon Chrétien pears were known by the Romans, and in the 16th century were con-



Archeological trench



Commemorative orchard

sidered 'the best pear of all'. A number of varieties were lost to the UK over the centuries and had to be sourced from places like the United States where they had been taken centuries earlier. The origin of some other varieties are from 'Wildings', a discarded core or dropped apple results in a tree with quality fruit. The provenance of our apple tree Nancy Lee was a hedgerow outside Blewbury on the edge of the ancient Woodway Road that leads to the Berkshire Downs.

With a bumper harvest in 2022 and a very cold winter, we await with interest the impact on the quantity and quality of fruit this season.



SUNDAY LUNCH

AT
draycote
HOTEL
Restaurant

FROM
£18.95
PER PERSON

BOOK NOW

If you would like to join us for Sunday lunch, please ensure you pre-book 24 hours in advance.

01788 521 800 | Draycotehotel.co.uk | CV23 9LF

A NIGHT AT THE MUSICALS

WITH THE BBC CONCERT ORCHESTRA
HOSTED BY RADIO LEGEND KEN BRUCE

COMEDY ON THE CLOSE SUPPORTING CANCER RESEARCH UK PRESENTS

SEANN WALSH

TOM SEALS PRESENTS... **HORRIBLE HISTORIES**

FLABBERGAST THEATRE COMPANY - MACBETH

BRUNO: A TRIBUTE TO BRUNO MARS

STRATFORD PRODUCTIONS -
MACREADY! DICKENS' THEATRICAL FRIEND

MOTIONHOUSE

VAMOS ANGUS
THEATRE BASKERVILLE

COMEDY CLUB **JOHN** AND
4 KIDS **AGARD** MUCH MORE...



25-29 JUNE

Rugby, Warwickshire

Principal Partners:



In aid of:



Supported by:



thefestivalontheclose.co.uk



King Charles III, Coronation Oak

By Mike Judge MBE, Trustee and Organiser

As we move into the summer months, of special interest to us this year will be the first leaves on our Dunchurch Oak Line and the latest addition of His Majesty's Coronation Oak. You may have witnessed its planting on the evening of 5th May as a precursor to the celebration organised by our collaborator FODS.

We had an outstanding community sponsor for the latest tree which was purchased and nurtured in my garden whilst the site for planting was approved by Rugby Borough Council. We are now ready for the addition of the royal plaque!

Following the precedent of involving community groups for the planting of Her Majesty's Oak Line, we now have the opportunity of involving individuals, families and village traders in helping to sponsor brass plaques identifying all sponsors and recording their names in *The Dunchurch Oak Line* book. This is currently being assembled and should hopefully be on display in the library quite soon.

Our good friend Paula from Wanda Fashions has kindly agreed to act as the collecting point for all your donations. For just £1 your name will be added to all our generous donors in the book. If you wish to make a family gift you can have all their names displayed for just £3 and if you are in business in the

village, run a shop or a hostelry, you too could be included for just a £5 donation. To make the process as simple as possible, please print your name(s) on a sealed envelope containing your donation and take it to Wanda's.

Should there be any surplus funds when all plaques have been purchased, this will be passed to FODS to

help with the future upkeep of our iconic 'Oak Line'.

I do hope you will take the opportunity to be a part of this historical occasion which will leave a positive mark on our village for generations to come.

Many, many thanks for your support.



Mike Judge and Girl Guide helpers plant the King Charles Coronation Oak

WE GET TO KNOW YOUR TEETH, PERSONALLY.



We all know how important our teeth are to health and confidence. Courtyard Dental offers a pure and uncomplicated service for all the family. And because we understand how people can feel about going to the dentist,

we provide it in a welcoming and reassuring environment. We are an independent practice, and because we perform all the work, including hygiene, we really get to know your teeth. Why not call us today.



COURTYARD
FAMILY DENTAL PRACTICE
WE KNOW YOUR TEETH, PERSONALLY.

01788 519 831 alexia@courtyard-dental.myzen.co.uk r/o 4 Daventry Rd, Dunchurch, Warwks. CV22 6NS

We Clean Ovens

...so you don't have to!



Call us today to have your cooking appliances sparkling, using our own eco friendly products.

Our oven cleaning experts will leave you free to enjoy your valuable leisure time.

oven [®]
oven valeting service

Local | National | Affordable



Call TODAY for
LOCAL service

01788 816863
www.ovenurugby.net

Snippets from the WI Minutes in 1923

By **Anne Gilbert**, courtesy of the WI's considerable archive material



Membership of the WI was 143. The WI has now grown into such a large enterprise and has so many interests and thanks are all due to those members who by their keen efforts, large sums have been contributed to General Funds, as the demands on these are now very numerous and the running expenses of the Institute have grown in proportion with its many interests.

'Two tennis courts have been laid and will open for play in May, a number of WI members have helped with the cost and equipment and they are now paid for. The scheme had been a fairly large undertaking for the Institute and it is hoped the first season would be a satisfactory one. The second season of Hockey had gone well with 27 playing members who are keen and enthusiastic. The 2 teams will play their matches on a Saturday and Wednesday. The Sports Section of the membership added to the pleasure of members.

'The WI Shop that had opened in 1921 for the sale of goods made by members and now by 1923 the fame of Dunchurch Gloves had spread to many parts of the world.

Gloves are made and sold to the Queen of Spain – 12 long of white chamois; the Prince of Wales – 12 pairs; and Emir Abdula ruler of Trans Jordan. A set of Elizabethan gloves has been made for the Old Vic theatre with "Made in Dunchurch & Thurlaston WI" being printed on the programmes.

'The Library will be opened very shortly and the Institute hopes to purchase shelves to store the books and the date of opening and rules will be announced shortly. The books have been listed and indexed.'



Gloves made by the Dunchurch WI



Women's Institute Industries shop

A Glimpse into the Past

This book which was published by the WI is now available from Dunchurch Post Office for just £3.50.



It includes a great deal about Dunchurch, the Lords of the Manor, St Peter's church, the connection to the Gunpowder Plot, coaches, inns and of course... a history of Dunchurch & Thurlaston Women's Institute and its glove making Industry.

The Shop was thought to be on the Daventry Road and the Library was at the Sandford Way entrance.



NB We now have a new Facebook

page – Dunchurch and Thurlaston WI

The Green Man



ALL CHANGE AT THE GREEN MAN

New Management • New Menu

Serving superb freshly cooked quality food
and all at wonderful value for money prices

Daventry Road
Dunchurch
CV22 6NS

COME AND JOIN US Open every day from 12 noon to 11pm

Easy
parking
to rear



STEAK DEAL FOR 2

Two steaks and a bottle of
house red, white or rosé
starting from £35

Choose your
steak

8oz Rump
8oz Sirloin
10oz Ribeye
Mixed Grill

All supplied by butchers Joseph Morris from local farms • Quality Assured



Reserve a table 01788 810210 email: thegreenman@splendidpubgroup.co.uk
facebook.com/greenmandunchurch www.thegreenmandunchurch.co.uk

WWW.ANEWAESTHETICS.CO.UK



BEAUTY, LASER & AESTHETICS

FREE CONSULTATIONS AVAILABLE

Facials, Massage, Laser, Electrolysis, Fat Dissolving,
Waxing, Tinting, HD Brows, Nails, Manicures,
Pedicures, Chemical Peels, Microneedling, Aesthetics,
Acrylics, Semi Permanent Eyebrows, Ear Piercing

Book online using our new upgraded booking system

01788 817070 3a Southam Road, Dunchurch, Rugby, CV22 6NL



Please Scan the QR
Code to take you
directly to our Facebook
page

Local view

By Rob Collings

Have you ever spotted one of these carved into walls when out and about in the village?



Ordnance Survey was born out of a necessity to map the Scottish Highlands. This need arose during the Jacobite Rising of 1745 and is

They are Ordnance Survey Benchmarks.

While trig pillars were used as accurate fixed points for mapping coordinates, benchmarks were fixed points which were used to calculate and map a height above the mean sea level. Benchmarks have been around for a long time, much longer than trig pillars. While the first systematic network of levelling lines and associated benchmarks was initiated in 1840, some benchmarks date back to 1831. The last traditionally-cut arrow-style benchmark was carved on a milestone located outside The Fountain pub in Loughton, Essex, in 1993.

Why 'benchmarks'?

The horizontal marks are used to support a stable 'bench' for a levelling staff to rest on – hence 'benchmarks'. This design ensured that a staff could be accurately repositioned in the future and that all marks were uniform.

The term benchmark (benchmarking) is thought to originate from the standardisation of weaponry, guns and ammunition.

where its rather military-sounding name comes from, as the Board of Ordnance (the defence ministry) was tasked with surveying the land. This is why the mark is the same as the Ministry of Defence arrow found on weapons and clothing.

Where are they?

There were over 500,000 benchmarks created, but this number is reducing as roads change and buildings are demolished. They are quite hard to find but there are ten in the village carved into various walls. One is carved in the Dunchurch Social Club wall on the left hand side.

If you Google 'OS benchmarks' you can download a map where they are all located.

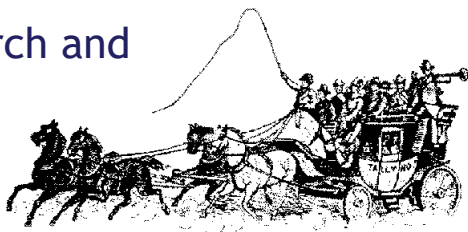
Today, access to the national height reference is through the OS Net permanent GPS stations. The advantage of using this method is that anyone with accurate GPS can access the height system anywhere so the benchmarks are no longer required.

Coaching Days in Dunchurch and District – part 2

By **Freda Bennett**

The coaching era reached its peak in the 1830s with 40 coaches passing daily through Dunchurch. In 1835, two mail coaches from London to Holyhead and two Royal Mail coaches from London to Liverpool would stop at the 'Bell' at the Coventry end of the village. Eleven coaches from London to Birmingham, one from London to Manchester, via Birmingham and Stoke, two from Cambridge to Birmingham via Daventry and two from Oxford to Leicester via Banbury and Lutterworth, used the 'Green Man' on the Daventry Road. The London to Shrewsbury coaches stopped at the 'Dun Cow'. All the inns needed stabling and lads to help see to the horses, with the local smithies and saddlers providing their services as and when required.

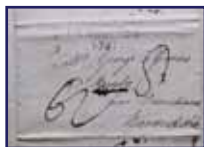
Apart from the mail, other coaches had individual names: The Patent Tally-Ho, The Eclipse, The Economist, The Greyhound, The Celerity, The Wonder, The Independent, The Accommodation (the only one to travel on to Rugby for the 'Spread Eagle' in the Market Square), The Red Rover, The Rising Sun, The Branch (to Leamington and Warwick) and The Regulator (Oxford to



Leicester via Banbury and Lutterworth). Some coaches held four passengers inside and as many as eight to eleven passengers outside with the accompanying luggage and belongings.

Below is an extract from an interview with Joseph Wilson, an old post-boy, aged 95 years, taken from *The Advertiser*, 10th December 1910. At the time of the interview Joseph was living in one of the Lawrence Sheriff Almshouses (since demolished) in Church Street, Rugby.

'Dunchurch was the liveliest little place betwixt Holyhead and London. Coaches were going through night and day, and the blowing of the horn seemed almost continuous'. Local gentlemen were in the habit of driving to Dunchurch in their own carriages to catch the coach to London, and Joseph frequently saw the Earl of Craven, the Earl of Denbigh and Mr. Newdegate of Arbury. Once, Joseph drove Lady Craven in a four-in-hand carriage from Dunchurch to Daventry.



'Dunchurch was a different place in those days, Rugby was only a bit of a place and I remember that letters were addressed Rugby near Dunchurch'.

He recalled the day he drove the directors of the London & North Western Railway from Dunchurch to Kilsby to inspect the tunnel which was in the course of construction. He never met with an accident, nor was the coach ever stopped in his time by highwaymen or footpads, who abounded in the neighbourhood in the earlier part of the 19th century and were the fear and dread of pedestrians and others whose travels led them across Dunchurch Heath. However, he had his share of experiences and trials, as all post-boys had, and one of the most startling was the overturning of a coach. As the vehicle was leaving Dunchurch for Coventry, a boy in the highway cracked a whip and the horses attached to the coach swerved and ran into a ditch. The coach overturned and the outside passengers were hurled 'pell mell' into a field on the opposite side of the hedge. He fancied he could still hear the women's shrieks, but fortunately no one was seriously hurt.

'Those were punishing times for the horses', he continued, 'the drivers did not pull up between stages and the poor animals would often pant for half an hour after being detached from the coach. The journey from London to Birmingham occupied about thirteen hours, some coaches were slower but the fast ones travelled about 10 miles an hour'.

When Joseph was post-boy at Dun-

church, there were at that time six inns: The Dun Cow, The Green Man, Mother Redcap, The Red Lion, The Crown and The Bell. Most of these were posting houses with the Green Man, Dun Cow and the Bell being the principal places. He recalled the coaches, especially the Tally-Ho which stopped at the Green Man. There was the Wonder and the Stag which ran in opposition and on 1st May, when the horses were decked out with new harness, these two coaches used to race from Birmingham to London, and in passing through the village en route, the guard of the Wonder was wont to play a few bars from the old hunting song, 'This day a stag must die.'

The two-horse coach that ran between Leicester and Southam, The Regulator, was dubbed by the post-boys 'The Pig and Whistle'. It was driven by John Hobbey, whose son for many years was in the service of the late General Tower, of Thornfield, Rugby. The Dun Cow had four four-horse post-boys and two pair-horse post-boys. The boys wore white smock frocks over their smart livery



The Dun Cow



Video & VHS to DVD & USB



Transfer all of your
precious memories,
from video & camcorder
tapes as well as cine film
formats to DVD & USB
from only £12 per tape!

Just drop your tapes in to us at the
Dunchurch Post Office & General Store,
33b Southam Road,
Dunchurch, CV22 6NL
or contact us 01788

815293 / support@
familymemorys.co.uk



Familymemorys

20% discount for all local residents!



YOGA CLASSES & RETREATS

Hatha Yoga

Tuesdays 7-8pm

Fridays 9-10am

Bourton, Draycote &
Frankton Village Hall

Yoga Beginners & Beyond

Thursdays 6-7pm

Thurlaston Village Hall

Vinyasa Flow

Thursdays 7.15-8.15pm

Thurlaston Village Hall

Summer Yoga Retreat

Saturday 24 June

Bourton, Draycote &
Frankton Village Hall

www.loveyouliveyoga.com

07735630862

♥ loveyouliveyoga



Revel Funeral Care

"One family caring for another"

Independent Family Funeral Directors Serving the Community of Rugby & Surrounding Areas

- Professional and caring team under the supervision of Jaime Hailstone.
- Available 24 hours a day.
- Home visits by appointment.
- Private arranging suite & Chapel of Rest.

Revel Funeral Care

63 Overslade Lane, Rugby, CV22 6ED.

01788 519577

info@revelfuneralcare.co.uk

www.revelfuneralcare.co.uk





The Green Man

to keep it clean and when the shout rang through the yard, 'Four-horse up' or 'Pair-horse up', they threw off their smocks and jumped on their horses sharply.

At Christmas time, the coaches would be heavily laden with parcels and pheasants and other kinds of game hung all round the coach. William Hobley, son



The Crown

of the above mentioned John, was at Christmas time, stationed at the bottom of Braunston Hill with a pair of horses to help the heavily laden coaches up the hill. One year the coaches were snowed up at Dunchurch and the village was very lively for a day or two with the escapades of the coachmen and guards.

Part three will appear in the September issue.

Girlguiding

Can you help?



Girlguiding is very short of local leaders. Dunchurch Rainbows, Brownies and Guides meet on Wednesdays and Cawston Rainbows on Thursdays. Leaders learn a lot, have fun and a great time. If you are interested and want to find out more call 01788 810979 after 6 pm or email bg.smith902@btinternet.com. Thank you.





YOUR NEW HOME AWAITS AT THIS CANALSIDE COMMUNITY IN RUGBY



Make your move this year, to your dream home at The Moorings, Rugby. From modern townhouses to spacious, detached homes – we have the perfect home for you.

3-5 bedroom homes from £349,995

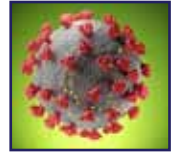
The Moorings, Crick Road, Hillmorton, Warwickshire, CV23 1BL
0333 3558 483 For more information, please visit www.dwh.co.uk



DAVID WILSON HOMES
WHERE QUALITY LIVES

Doctors in Dunchurch, Part 18: Pandemic

By Dr Ian Czerniewski, Dunchurch GP since 1991



The first hint of a possible global health threat appeared at the end of 2019. Initially, we hoped that Covid-19 would be no worse than the previous outbreaks of avian and swine flu which had mostly fizzled out. It soon became clear that this was different. We all watched with horror as Italian hospitals were overwhelmed by life-threatening illness and when Covid hit the UK the reality was frightening. Doctors understand the process of illness caused by viruses, but we could offer no treatments. We, too, were in awe of the power of nature. Handwashing, face masks and social isolation seemed to be our only weapons.

The national lockdown was the most socially momentous event since 1945.

Suddenly the surgery was almost deserted. Most patient contact was by telephone. Treatments were prescribed remotely, without examination. There was anxiety that other patients, practice staff and clinicians might be at risk of exposure. Patients with suspected Covid were advised to isolate and keep away from surgeries. If they had to be seen for other reasons, suspected Covid cases were seen in a specially prepared room with minimal furniture (which could be deep cleaned and disinfected efficiently between patients) which was accessed

from the rear of the building. Masks, gloves and gowns were worn. Patients kindly made and provided us with vizors.

Many practices literally locked their doors and many reported high staff absences. Some reported extensive public dissatisfaction and abuse.

Dunchurch Surgery never locked the doors. Our loyal and courageous staff continued to work throughout the lockdowns despite personal risk. Our patients respected the restrictions, did not abuse them (or the staff) and demonstrated remarkable stoicism. There was, of course considerable anxiety and patients who tend to worry, worried even more. We watched the rocketing hospital admissions and the dreadful death toll. Six of our patients sadly died of Covid during the first wave of the pandemic. Many more were seriously ill, some on ventilators in hospital, but pulled through. While General Practice did what it could, it was the heroic ambulance personnel and ITU hospital staff dealing with the sickest cases who really deserved the Thursday evening applause.

Treatments evolved slowly but only slightly improved outcomes. Would we ever get a vaccine?

Anne-Marie's Florist

61 The Square | Dunchurch | Rugby | Warwickshire | CV22 6NU




Anne Marie's Florist can offer a wealth of experience when planning your big day.

Situated in the heart of Dunchurch with a private consultation room we would be pleased to offer you a free no obligation quote. **Our diary has a few remaining slots for 2024 and is booking for 2025.**

Established for 36 years and situated in the heart of Dunchurch village

Email: amflorist1@outlook.com

 www.facebook.com/AnneMarieFlorist

 [am_florist_dunchurch](https://www.instagram.com/am_florist_dunchurch)

01788 521 881

www.amflorist1.wixsite.com/website

Dunchurch Social Club Under New Management



- Two rooms available for private hire
- Non members always welcome
- Beer Garden
- Pool table, skittles table, dart board, juke box
- Family Friendly

The Square,
Dunchurch,
CV22 6NU
01788 811177



bookingsdscc@outlook.com

 Follow us on Facebook for all events and promotions

Road Building in Dunchurch

The following contains abbreviated extracts from two articles, the first being a report in the *Daily Telegraph & Morning Post* of 3rd February 1955 about the building of the M45. It is interesting to see how opinions about traffic travelling through the village may have changed.

The subsequent article from about 1957 resonates with Paul Sander's very interesting observations about the field next to the allotments and leaves us wondering if more fossils will be found with the building of the new relief road.

Dual Carriageway to Dunchurch

'A proposal to build a new dual carriageway to Dunchurch to form part of the link between Birmingham and the proposed 150-mile fast motorway from London to Sheffield is contained in the new roads programme announced by the Minister of Transport on Wednesday. As it is planned to run two national motorways close to Rugby, to the south and east, it seems inevitable that there will be considerable repercussions on land and property owners in the area as well as farmers and businessmen.

'Proposals to build a by-pass road round Dunchurch were made as long ago as 1938 and in early 1939 it was announced that the by-pass was to be constructed

as planned, despite protests. But then the war started and the scheme was never begun. Whether or not the road now proposed will take a similar course to that planned before the war is not yet clear, but it will doubtless raise similar objections from local residents.

'Some of the local arguments against the pre-war proposals were that they would cause a heavy loss of trade, would act as a slow poison on the village life, would cause considerable demolition of property, would cut up farmland and devalue both land and property. In 1938 the Parish Council at Dunchurch lodged a protest against the making of the road on the grounds that it was unnecessary as the existing road could be widened at much less cost and that it would be detrimental to the welfare of the village generally.'

Pre-Ice Age Fossils – Embedded Deep in Blue Clay

'The fossilised relics of sea creatures which inhabited this part of the world over a million years ago, when the land upon which Dunchurch is now built may have formed





UNION CANAL CARRIERS LTD

Union Canal Carriers aims to set standards that few hire fleets can match. Because we are as enthusiastic as ever about "canaling" and have over 50 years hiring boats on the "cut" you know that you are in safe hands and can cruise with confidence.



Holiday Boat Hire



You can hire this boat for a day

For up to 12 people
Ouzel II is fully equipped with a galley, sink, gas hob, toilet, seating for 12 & buoyancy aids on request.

Great value! Great fun!

No experience required, instruction given

Choice of scenic routes

Ideal for family or other social occasions

Have a canalside picnic or lunch in a pub

Monday - Friday £150.00 incl

Weekends / bank holidays -

£195 incl

Telephone 01788 890784

Union Canal Carriers, Braunston Pump House, Dark Lane, Braunston, Northants NN11 7HJ

Tel: **01788 890784**

Email: info@unioncanalcarriers.co.uk

Web: www.unioncanalcarriers.co.uk



Follow us on Facebook



Follow us on Twitter

LEAMINGTON HASTINGS BOWLS CLUB

ANY AGE, ANY ABILITY WELCOME TO PLAY

Outdoor Bowls April - September from 6pm

Indoor Short Mat Bowls September - April 2 - 4pm

Every Wednesday at Leamington Hastings Parish Hall

**EXERCISE,
GOOD
COMPANY
AND FUN**

**NON
LEAGUE
CLUB**

**BOWLS
SUPPLIED IF
REQUIRED**

PLAY TWICE - NO OBLIGATION

For more information call 01788 336913



THE
RUGBY FLOOR COMPANY

DUNCHURCH SHOWROOM

open by appointment

01788 815700

PARQUET | WOOD | KARNDEN | LAMINATE | RENOVATION



Beautiful floors for beautiful homes

3C SOUTHAM RD | DUNCHURCH | CV22 6NL

part of the ocean bed, have been found in great quantity during excavations for the new London Road by-pass recently.

'Workmen excavating the land beside the Southam Road just outside Dunchurch where the new road will pass under the existing highway have found the fossilised remains of shellfish lying loose or embedded in blue clay twenty-five to thirty feet below the surface. The fossils are most plentiful in the land west of the existing road between Dunchurch and Thurlaston.

The fossils which have been most commonly found here are the spiral coils of ammonites.

'A large one, measuring about eighteen inches across and weighing about a hundredweight was thrown up by a trenching machine the week before last and was examined by some members of the staff of the Natural History Museum in South Kensington who took it away with them for cleaning and further examination.'

Coronation Art



Staddle Stones

Staddle stones were originally used to support the bases of storage structures such as granaries, lifting them

above ground level and helping to keep the contents dry and free from vermin. However, more recently, the staddle stones at The Old Holt have provided the perfect structure for yarn bombing. The front cover and the picture above show some of these latest coronation creations by Kate, Sarah, Wendy, Linda, Sue K, Thelma, Barbara, Julia and Sue.

Coronation Crown

This fabulous crown (below) situated on the Lord Scott Green is a joint creation by Phill and Jaine TV. Phill cut out the shape of the crown in MDF using a jigsaw and Jaine, who originally came up with

the idea, provided the artwork and created the gems using recycled bottle tops. What a transformation!

Thank you everyone for taking the time and bringing so much colour to the village.



Wanda Fashions



Wanda Fashions@TheGreenDunchurch

The Old Bank House, The Green, Dunchurch CV22 6NX
T: 01788 522021 E: paula@wandafashions.com www.wandafashions.com

EXCLUSIVE PRIVATE HIRE

Providing a service for Dunchurch

WOMBLES WHEELS

*wishes to thank it's
customers from Dunchurch & the
surrounding area for their continued
support of local business.*

**Available to take you on
your holidays in England**

R. Woerner Trading as Wombles
Wheels, specialises in long distance
work but short trips can be
accommodated.

**07979 032 068 or
01788 811 723 (9am - 5pm)**

10 YEARS EXPERIENCE • CRB CHECKED

Email: robin.woerner@hotmail.co.uk

St Peter's Church

By Rev Pat Townshend

Easter is past and the splendour and excitement of the coronation are over and the year now settles into its routine as we look forward to summer. All too soon the days will begin to shorten and we will look towards autumn. So, our lives have their seasons and at St Peter's we continue to mark the defining moments of birth, marriage and death. God is God of all seasons and walks with us through joy and sorrow, times of desolation and times of consolation.

We were sad to say farewell to our organist, Richard Copeland, who decided to relocate to Denmark. He was with us for just over a year and has left a gap difficult to fill. We are incredibly grateful to the organists who have offered their services to fill that gap and hope we will find a new, full-time organist soon.



Good Friday Walk of Witness

We look forward to holding a concert by Espresso on 22nd July and one by Ninebarrow on 7th September (see page 37).

We have restarted the Beech Tree coffee shop in the church on the first Tuesday of each month and hope it will flourish. Many thanks

to our generous volunteers.

Junior church on the fourth Sunday of the month and the Parents and Baby group at the vicarage on the third Friday continue and we welcome newcomers. The latter is purely social; if you have a small baby and need company, please come, whatever your faith or none. Phone me on 01788 461987 for more details.

Dunchurch Community Library

It is quite rare to have the benefit of a village library these days and we are most fortunate to have this wonderful facility right at the heart of our village. To keep it thriving, more volunteers

are needed. Full training is given, and you would be working with a conscientious and friendly team. Just pick up a volunteer form from the library.



DUNCHURCH

WHY WORK FROM HOME?

OFFICE SPACE TO RENT



Small modern office approx. 250sq ft

Central village location

Situated within the grounds of
Village Green House, The Green,
Dunchurch

Access to separate kitchen and
washroom facilities

BT provision

Flexible lease terms and rent

Available from 1st July 2023

More information and viewing

Contact: Barbara Harris 07837 182114 email: info@vghrugby.co.uk

PEST CONTROL

IAN GALL PEST CONTROL

Local & Independent

Home and Large Scale control of:

- Moles
- Wasps
- Ants
- Rats
- Mice
- Rabbits
- Fleas
- Bed Bugs



Telephone:

07764 407749

 **Facebook/iangallpestcontrol**

www.iangallpestcontrol.co.uk

Rheams (Plumbing and Heating) Limited

Tel. 01926 428752

FAMILY RUN BUSINESS ESTABLISHED IN 1967

- GAS SAFE REGISTERED ENGINEERS
- 24 HOUR CALL OUT SERVICE,
7 DAYS A WEEK
- RUGBY BASED ENGINEERS
- FREE INFORMATIVE CONSULTATIONS
- LARGE/SMALL SCALE RENOVATION
- NEW BUILDS
- BOILER REPLACEMENTS/REPAIRS
(natural gas, LPG and commercial)
- LANDLORDS' CHECKS
- POWERFLUSH SERVICE
- BATHROOM INSTALLATIONS
- ALL GENERAL PLUMBING

email: info@rheams.co.uk

Concerts at St Peter's

A Concert of Music with the renowned trio Espresso

Back by popular demand following their sensational performance last year.

Guest tenor Rob Forbes
Accompanied by Jo Foote

**Saturday 22nd July 2023 at
St Peter's Church, Dunchurch**

Doors open
6.30pm for
7.00pm start



Cash bar and Raffle

The programme includes an enjoyable mix of songs from popular musicals, well-known operatic arias, some fun comedy and pop songs too – Phantom of the Opera, Mikado, Hamilton, West Side Story are just some of the highlights

Tickets £12.50 includes a dish of strawberries and cream. Children under 12 free



Available from Wanda's, Dunchurch Post Office and on the door (subject to availability)

All proceeds will go to St Peter's Church



Ninebarrow – 7th September

Award winning folk duo Ninebarrow are making a welcome return to Dunchurch on 7th September at St Peter's Church at 7.30pm. This is the third visit to Dunchurch which they tell us is one of their favourite venues with wonderful acoustics and an enthusiastic audience. Jon and Jay specialise in harmonious ballads and uplifting folk songs given their own modern interpretation. They have been winners of the Radio 2 Folk awards and their most recent album *A pocket full of acorns* quickly reached the top of the Amazon Folk chart. They appeared on the BBC Countryfile programme after planting 1000 trees in their native Dorset.

Tickets are sure to sell quickly and are already available at www.ninebarrow.co.uk/gigs at £16 (plus 43p online booking charge) – and sales to fans in the Midlands have already been made. Tickets at £16 will be available from Wanda Fashions nearer the date or contact Chris Sarson (01926 632408).



VISIT AND ENJOY

Historic Dunchurch

Heart of England in Bloom Gold winners 2019-2021

Gold winner in Britain in Bloom 2022

Village shops and businesses look forward to welcoming you

Wanda Fashions
The Green
01788 522021

**Dunchurch General Store
and Post Office**
Southam Road
01788 819951

Courtyard Dental
Daventry Road
01788 519831

Fosse House Gallery
Coventry Road
01788 877077

Mops Hair Studio
Daventry Road
01788 810452

Rowlands Pharmacy
The Square
01788 814770

Ann Marie's Florist
The Square
01788 521881

SPAR – Dunchurch
Service Station
Coventry Road
01788 814770

Carter & King
Estate Agent
The Square
01788 550066

Truly Scrumptious
Nail & Beauty
The Square
01788 815113

Soft Furnishings by Mickie
The Square
01788 813334

Lucy Locket Hair Salon
The Green
01788 813718

Solstice Nursery and Cafe
Coventry Road
01788 711797

ANEW Aesthetics
Beauty Salon
Southam Road
01788 817070

Rugby Flooring Co
Southam Road
01788 815700

The Cake Gallery
Southam Road
01788 522299

Patrick Ryan Hair Salon
Southam Road
01788 521315

Dunchurch Barbers
Southam Road
07508 440664

Birth Boutique
Southam Road
07842 643409

Rugby Rd Newsagents
Rugby Road
01788 810422

The Kitchens Inc
The Square
01788 220206



Sponsored by



DAVID WILSON HOMES

WHERE QUALITY LIVES





Where to eat in Dunchurch

Pubs, restaurants, take-aways and coffee shops – the choice is yours

Dunchurch Fish Bar – Takeaway
Southam Rd 01788 815058

The Green Man – Public House
Daventry Rd 01788 810210

The Dun Cow – Public House
The Square 01788 810305

Huntsman Carvery – Restaurant
The Square 01788 811748

Cinnamon Lounge – Indian Restaurant
The Square 01788 812855

Malancha – Indian Restaurant
Daventry Road 01788 819141

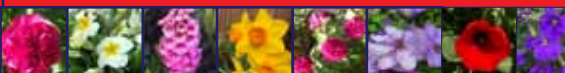
Dunchurch Pizza Place – Takeaway
Southam Road 01788 810000

Crystal Chinese – Takeaway
Southam Road 01788 812888

Dunchurch Social Club
The Square 01788 811177

Square Coffee – Coffee Shop
The Square 07816 278409

Cuppa – Coffee Shop
Daventry Road Opening soon



Sponsored by



DAVID WILSON HOMES

WHERE QUALITY LIVES

Dunchurch Sportsfield & Village Hall

For Hire

Dunchurch Village Hall and its facilities can be hired for a variety of events - from Community Groups, Fundraising Events & Public Meetings to Weddings, Parties and Family Functions

The facilities briefly comprise of:



- Capacity in Main Hall - 160 Theatre Style or 130 seated at tables
- Main Hall has permanent stage, adjustable lighting, fully equipped sound system with hearing loop
- Separate meeting room and a lounge, club annexe & sportsfield including changing rooms
- Modern kitchen/bar - licence available
- Main Hall air-conditioned. Other rooms centrally heated
- Disabled facilities & double door access for loading
- Set in landscaped grounds with 70 car parking spaces, including disabled

For further details please contact us or visit the website:

Tel: 01788 522444

Email: jane.bookings@dunchurchsportsandvhall.co.uk

Web: www.dunchurchsportsandvhall.co.uk

Rugby Road, Dunchurch CV22 6PN



Bike gathering dust in the garage or in need of repair?

Check out our website for all cycle maintenance and associated repair services!

Our mobile service means no more bike shop hassle, our "Cytech Registered" mechanic will collect from you, carry out the work in our workshop and redeliver within an agreed time period.

We are a local service provider and only operate within a 10 mile radius of Dunchurch.

For further details go to:

www.dunchurchcycle.co.uk

Or call/text: 07831499697

Look forward to hearing from you, Martin

Note: We also repair/service mobility aids etc..

Dunchurch Baptist Church

By Eleanor Holdsworth

As we write this at the very end of April the blossoms are blooming, trees budding and there have been some amazing sunsets. We're grateful to be able to enjoy God's creation, especially with the reservoir on our doorstep.

In the last few months, we've really enjoyed a variety of people leading our services, as well as our more informal café-style services (complete with coffee and pastries!).

We continue to be able to welcome many people to use the building, for regular bookings and one-offs for special events. This has included the Funstar drama group, with holiday activities and lunches for children who receive free school meals. We're happy to say the group will return in the summer holidays.



It's been wonderful to see more and more people coming to our regular activities like Noah's Ark toddler group and our Sunday morning services, as well as Messy Church. The 'Full' sign has been out in the car park on more than one occasion for Noah's Ark!

Do come and join us, on Sunday mornings at 10.30am or one of our other activities. All the details are on our website, dunchurchbaptist.org.uk

Dunchurch Pantry

'Give what you can, take what you need'

The Dunchurch Pantry, originally set up by Paul Hayden-Hart, has been providing for those in need since late 2021 and can be accessed during library open times, on Tuesday, Thursday and Fridays from 10am to 5pm and on



Saturdays from 10am to noon.

Our thanks to Paul, the library staff and all contributors for keeping this most worthwhile village amenity going.

A fully stocked 'pantry'

Dunchurch Village Magazine

As well as delivering free to businesses and households in the village, extra copies are available from the following: Rugby Road Newsagent, Dunchurch Post Office, Wanda's, Anne Marie Florist, Dunchurch Village Hall, Dunchurch Baptist Church and the Library. Our thanks to them and our advertisers for helping us keep the village informed. Latest and all previous magazines are also available on the FODS website under the news heading.



Advertising rates

Professionally delivered to homes and businesses in Dunchurch Village including Toft, Lime Tree Village, Dunchurch Hall and Lime Tree Avenue. Also now delivering to Onley Park. Over 1500 copies distributed each quarter, with an estimated readership of 3000.

Digital advertising included free of charge: advertisers can have, if required, a post on FODS Facebook Group page once a week on 'Thankful Thursday' – a useful update message for you and an effective opportunity to advertise for staff vacancies etc locally at no cost.

Size	Dimensions	Price
Full page	137mm x 197mm	£100
Half page landscape	137mm x 97mm	£50
Half page portrait	66mm x 197mm	£50
Quarter page	66mm x 97mm	£25

To place an order call Barbara on 07837 182114 or email info@vghrugby.co.uk

Deadline for September 2023 issue: 1 August

Index of advertisers

Anew	22
Anne-Marie Florist	30
Contented Soles	44
Cordwood Tree Services	4
Courtyard Dental	20
David Wilson Homes	28
Draycote Hotel	17
Dunchurch Cycle	39
Dunchurch Social Club	30
Dunchurch Sportsfield and Village Hall	39
Evolution Physio	12
FamilyMemrys	26
Ian Gall Pest Control	36
Jane Archer – Artist	14
JEM Financial Planning	9
Leamington Hastings Bowls	32
Lovetoloveyouyoga	26
Ovenu	20
Revel Funeral Care	26
Rheams Plumbing	36
Rugby Floor Company	32
Rugby School Group	18
The Green Man	22
The Printing Works	12
The Kitchens Inc	5
Union Carriers	32
Village Green House	36
Wanda Fashions	34
Wombles Wheels	34

Dunchurch Community Directory

Badminton Group	Dunchurch Village Hall, Monday 7.30pm	judge.patricia@googlemail.com Pat Judge 01788 810253
Beavers	Boys and girls aged 5¼ – 8 Mondays & Tuesdays, Scout hut, Done Cerce Close	www.dunscout.org.uk join@dunscout.org.uk
Cubs	Boys and girls aged 8 – 10½ Wednesdays at the Scout hut, Done Cerce Close.	www.dunscout.org.uk join@dunscout.org.uk
District of Dunchurch Brass	Wednesdays 7.45–10pm, Band Room, 15 Rugby Road, CV22 6GP	Lorraine Goodacre 07963 144704 Gary Smallwood 07876 688210 www.districtofdunchurchbrass2006-web.info
Dunchurch Allotment Association	Situated on Coventry Rd	www.dunchurchallotments.org.uk admin@dunchurchallotments.org.uk Secretary Paul Sanders 01788 811744
Dunchurch Bellringers	St. Peter's Church. Sunday Service ringing 9.50-10.30am, Practice, Wed 7.45-9pm	Tower Captain Simon Benton, 07890 325434 simon.j.benton@gmail.com
Dunchurch and Bilton Cricket Club	Based as Dunchurch Village Hall Rugby Rd.	https://dunchurchbilton.play-cricket.com
Dunchurch and Thurlaston WI	Meetings 2nd Thursday of each month, 2pm, WI Hall, Southam Rd.	Anne Gilbert 01788 811837 annegilbert1@hotmail.com
Dunchurch Band	Senior and training band	www.dunchurchband.co.uk dunchurch.band100@yahoo.com
Dunchurch Baptist Church	Baptist Church, Coventry Road.	www.dunchurchbaptistchurch.org.uk Elders, Chris Tabor 07899 841279, Katie Wederell 01788 842736, 07515 472578, Katie.w@dunchurchbaptistchurch.org.uk church secretary Sarah Coulon Sarah.c@ dunchurchbaptistchurch.org.uk
Dunchurch Boughton C of E (VA) Junior School	Primary education situated in Dew Close	www.dunchurchjuniorschool.org.uk admin3391@welearn365.com 01788 811028
Dunchurch Community Library	School Street Open Tues, Thur, Fri 10am - 5pm and Sat 10am to noon	www.warwickshire.gov.uk/dunchurchlibrary dunchurchcommunitylibrary@btconnect.com 01788 811355
Dunchurch Festival Group	Organise fete and other events. Meetings third Monday of each month 7.30pm at the village hall	www.dunchurchevents.org Chair Guy Watt gwattdfg@gmail.com Secretary Julie Peters juliepeters91@ hotmail.co.uk
Dunchurch Health Walks	Tuesday 2pm, Friday 10.30am Meet at war memorial	
Dunchurch Infant School and Nursery	Nursery children are taken from aged 2yrs 9months. Other year groups, Reception, year 1 and 2	www.dunchurchinfantschoolandnursery. co.uk, office@dunchurchinfants.co.uk 01788 810292

Dunchurch Pantomaniacs	Organise and perform village panto in January. Rehearsals begin October.	paul.lepoidevin@btinternet.com sueprotheroe@ymail.com
Dunchurch Parish Council	PC office based in the Library. Open Tuesday and Thursdays 10am – 1.00pm	clerk@dunchurchpc.org 01788 817550 or 07474 705061
Dunchurch Photographic Society	Meetings held at WI Hall, Southam Road	www.dunchurchps.com secretary@dunchurchps.com
Dunchurch Surgery	Dunsmore Heath (off Rugby Rd)	www.dunchurchsurgery.warwickshire.nhs.uk 01788 522448
Dunchurch Village Hall	Rugby Road	bookings@dunchurchsportsandvhall.co.uk 01788 522444
Dunchurch Voices	Ladies choir meets Wednesdays, 7.30pm at the Baptist Church, Coventry Road	Barbara Davies 07890 659857
First Dunchurch Scout Group	Fun, challenge and adventure for boys and girls aged 10½–14. Done Cerce Close on Thursdays	www.dunscout.org.uk join@dunscout.org.uk
Dunchurch Girlguiding including: 1st Rainbows 3rd Brownies 1st Guides	GirlGuiding girls have fun, adventure and space to discover their potential Age 5 – 7 yrs. Wed 3.45 – 4.45 pm Age 7 – 10 yrs. Wed 5.00 – 6.30pm Age 10 – 14 yrs. Wed 6.45 – 8.15pm	www.girlguiding.org.uk is where parents/ carers may express their daughters' interest in joining. Adult volunteers welcomed.
Friends of Dunchurch Society	Organises Britain in Bloom and Winter Wonderland Produces the village magazine	info@vghrugby.co.uk 07837 182114 fodnews1@gmail.com
Knowing Stillness Meditation	Dunchurch Library 10am Wednesday	Jim Hesketh 01788 891066
Rugby About Turn	Newsletters on local development	richardallanach@aol.com
Rugby Village Bridge Club	EBU Affiliated. Four pairs sessions and three practice sessions weekly. Courses/ teams occasionally. Held in club room, Dunchurch Village Hall.	www.rugbyvillagebridge.co.uk rugbyvillagebridge@gmail.co.uk 07710 467023
St Peter's Church	Vicar: Reverend Patricia Townshend revptownshend@gmail.com, 01788 461987 Churchwardens: Celia Jones 01788 314564 / 07712 936355 Kathryn Fowler: 07780 116024 / 01788 311118 Thurlaston Deputy Churchwarden: Brian Bowsher: 01788 812094 churchwarden@stpeters-dunchurch.org	

To make any amendments or to add your Dunchurch-based, non-commercial club or organisation, please email
friendsofdunchurch@gmail.com

Podiatry clinic & Shoe Fitters for all foot types

Degree Qualified HCPC Registered Podiatrist/Chiropodist

We are Rugby and Bilton's premiere podiatry/chiropody clinic and footwear specialists. We pride ourselves in being friendly and approachable and will only offer advice and treatment that is in your best interests to help you.

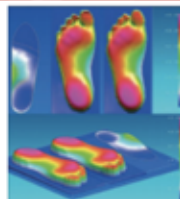


EAR WAX REMOVAL!!!

We are pleased to offer ear cleaning options with our brand new state of the art equipment

- Ear Microsuction
- Ear Syringing/ Irrigation
- Home visits available

**LATE CLINIC NOW AVAILABLE EVERY
WEDNESDAY EVENING UNTIL 8PM**



General Podiatry and Chiropody services including:

- Nail cutting
- Corns & Calluses
- Diabetic foot care
- Verrucae
- Ingrown toenails
- Nail reconstruction
- Warm wax massage for hands and feet

Richard has carried out extensive training and specialises in the following:

- Nail surgery for ingrown nails
- Steroid/ hyaluronic acid injections
- Gait analysis/ biomechanical assessment
- Bespoke insoles created using the latest 3d laser scanning technology
- Minor skin surgeries and biopsies



THE PERFECT FIT FOR WIDER FEET



waldläufer

Josef Seibel
THE EUROPEAN COMFORT SHOE

fashion by
rieker
KLEIDUNG